

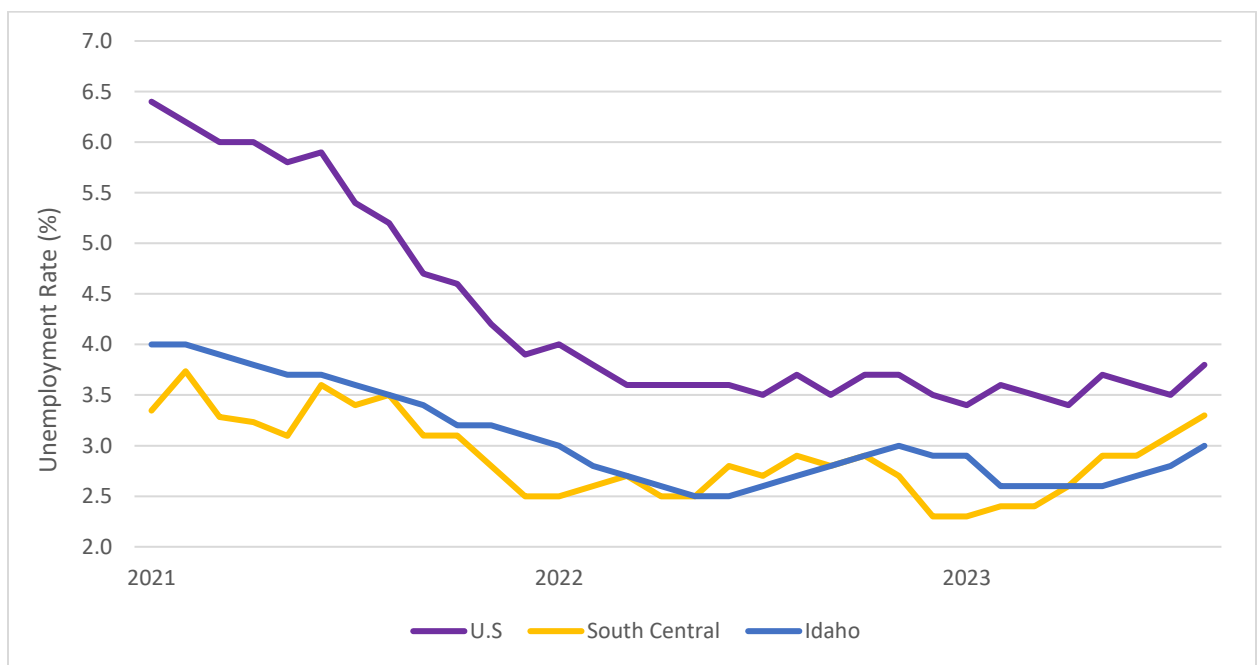
South Central Idaho’s Unemployment Rate Rises to 3.3% in August 2023

Tuesday, September 19th, 2023

1. Regional Overview

The Idaho Department of Labor’s recently released August data shows that the seasonally adjusted unemployment rate in South Central Idaho increased to 3.3% from July. Total employment increased by 1,072 from the previous month. Additionally, the number of individuals who are searching for work increased by 304 individuals. This means that the regional labor force grew by 1,376 persons (1.3 percent) from August to July. Interest rate hikes to combat inflation may now be hitting the labor market as unemployment has been slowly increasing in the State and the South-Central region. Inflation has continued to be stubborn but has been on a downward trend. August’s annual inflation rate is 3.7%, a 0.5% increase from July but down 4.6% from August 2022. Much of the recent jump in inflation comes from the energy sector, primarily the increasing demand for gasoline. With interest rates bringing down inflation, unemployment rates have started to rise as a result of a slowing economy. It is important to note that unemployment is still far below the theorized natural unemployment rate of 5%, the labor market is still strong, but has started to cool off as inflation is has maintained a downward trend.

Figure 1: Monthly Unemployment Rate, 2021 - Present

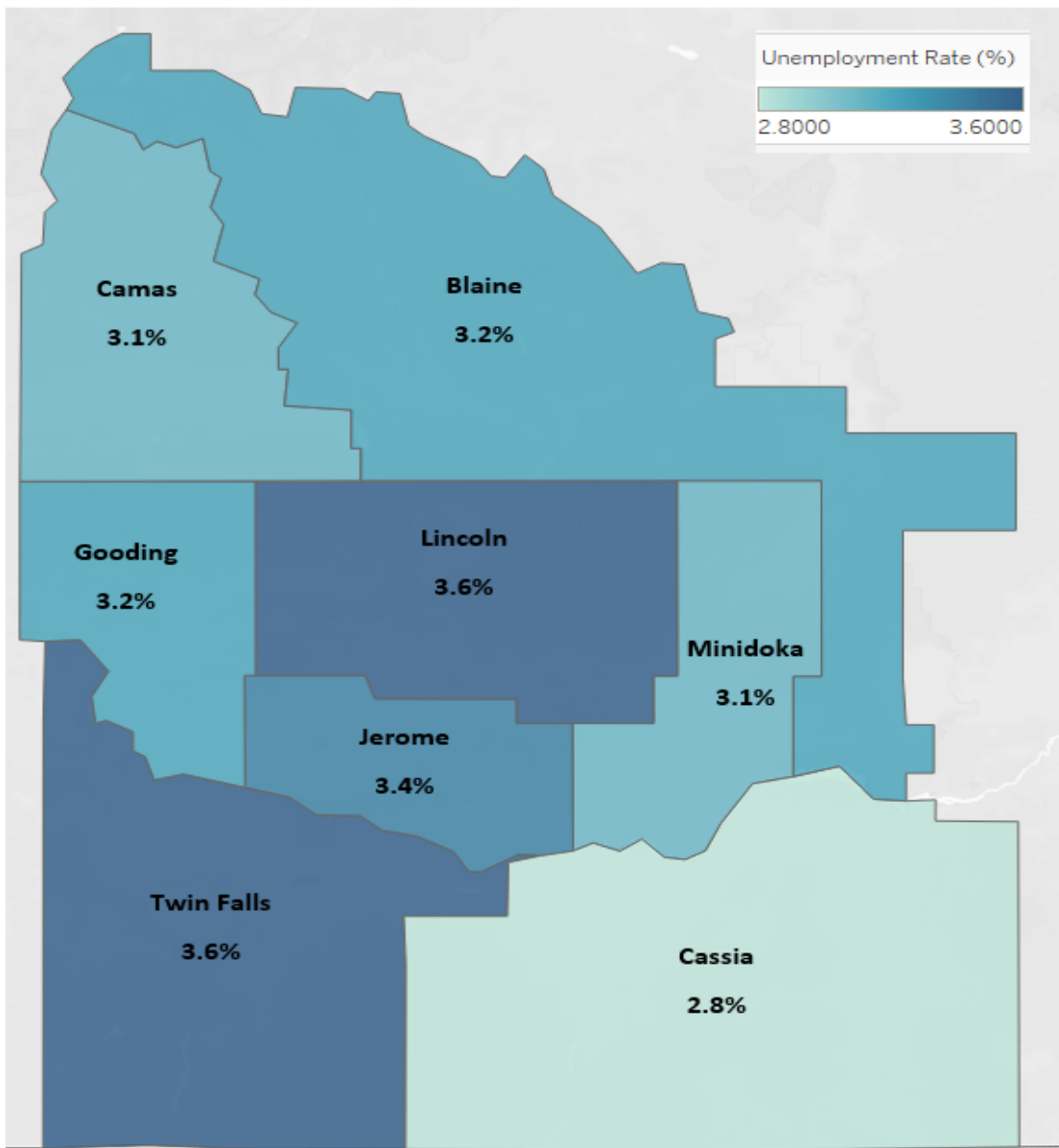


Source: Idaho Department of Labor & U.S. Bureau of Labor Statistics

2. County and City Overview

In August, all counties except Blaine County saw increases in their labor force from the previous month. All counties in the region except Cassia County experienced an increase in unemployment rate from the previous month. Lincoln and Twin Falls County has the highest unemployment rate in the region at 3.6 percent, joining Jerome (3.4%), Gooding (3.2%), Blaine (3.2%), Minidoka (3.1%), and Camas (3.1%) as counties above the state unemployment rate (3%). Cassia County has the lowest unemployment in the region at 2.9%.

Figure 2: Region 4 County Unemployment Rate, August 2023

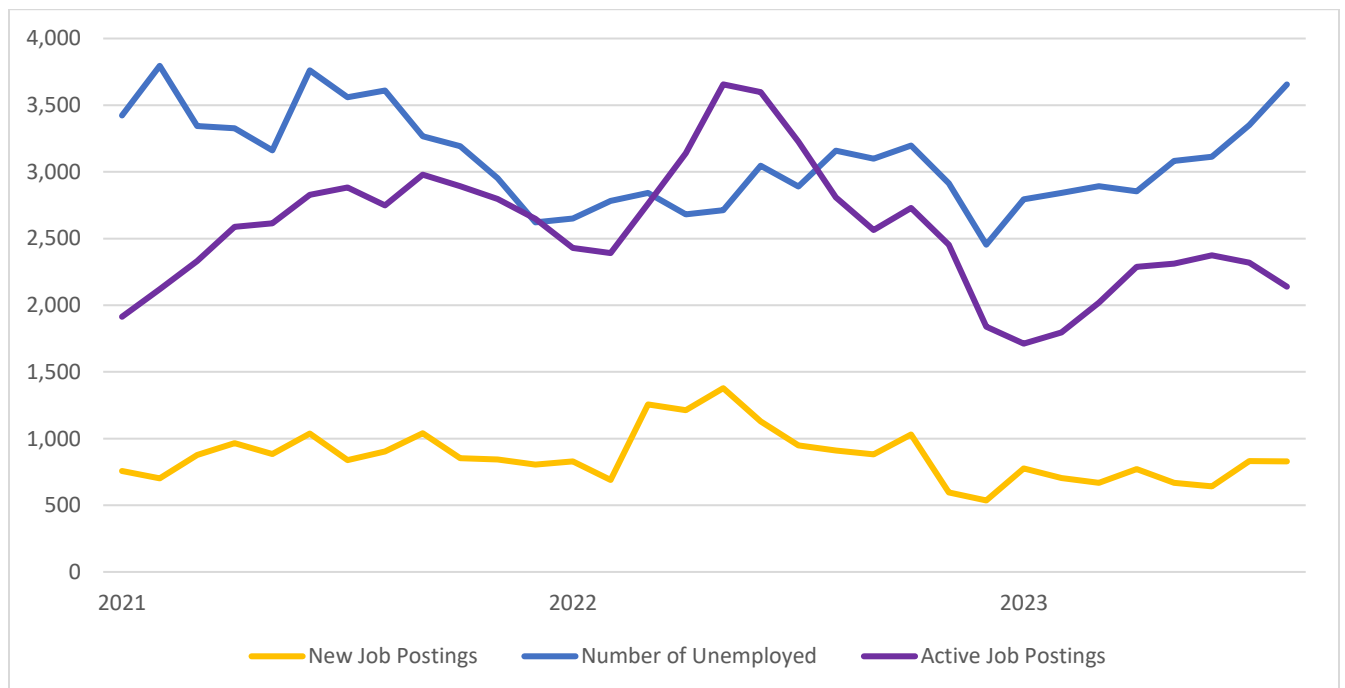


Source: Idaho Department of Labor

3. Looking Forward

August's labor market indicators suggest that labor demand is seemingly flat coming into the Fall. Figure 3 shows new and active job postings have been stable with minimal fluctuation over the past few months, however the number of unemployed has been rising in that same time frame. Job postings in Figure 3 have been de-duplicated to show only unique postings. However, many job postings have many open positions, so the total amount of total openings is higher than the graph suggests. When accounting for those multiple openings job postings surpass the number of unemployed, implying we are still in a labor market shortage. The fall brings farm jobs that are expected to climb as the harvest season approaches. South Central Idaho saw a negligible change in new postings from July to August. New postings are down 6% from last August, illustrating the slight cooldown of labor demand. The occupations with the most job postings were registered nurses, heavy and tractor-trailer truck drivers, and retail salespersons. The industries with the most job postings were restaurants and other eating places, general freight trucking, and dairy product manufacturing (4-digit NAICS). The sectors with the highest hiring difficulties as measured by median posting duration were healthcare and social assistance, retail trade, manufacturing, and professional, scientific, and technical services.

Figure 3: Region 4 Job Postings and Unemployment, 2021 - Present



*de-duplicated job postings; one posting can have many openings

Source: Labor Insights – Burning Glass Technologies & Idaho Department of Labor & U.S. Bureau of Labor Statistics

Table 1: South Central Idaho Seasonally Adjusted Unemployment (July to August 2023)

	August 2023 (Preliminary)				Changes From July 2023	
	Civilian Labor Force	Unemployment	Unemployment Rate (%)	Employment	Labor Force Change	Unemployment Rate Change
United States ¹	167,839	6,355	3.8	161,484	0.4%	0.3
State of Idaho	967,145	28,995	3	938,190	0.2%	0.2
South Central	109,515	3656	3.3	105,859	1.3%	0.2
Blaine	13,582	432	3.2	13,150	-0.2%	0.2
Camas	769	24	3.1	745	0.7%	0.1
Cassia	13,334	376	2.8	12,958	1.0%	-0.1
Gooding	8,952	285	3.2	8,667	3.5%	0.3
Jerome	12,272	416	3.4	11,856	1.2%	0.3
Lincoln	3,053	109	3.6	2,944	0.8%	0.1
Minidoka	12,772	392	3.1	12,380	1.9%	0.3
Twin Falls	44,781	1,622	3.6	43,159	1.2%	0.3
Labor Market Areas						
Burley MicSA	26,106	768	2.9	25,338	1.4%	0.1
Hailey MicSA	17,404	565	3.2	16,839	0.0%	0.1
Twin Falls MSA	57,053	2,038	3.6	55,015	1.2%	0.4
Cities						
Twin Falls	26,280	6355	3.8	25,279	1.4%	0.5

NB: ¹ In Thousands

Source: Idaho Department of Labor

For More Information, Please Contact:

Seth Harrington, Regional Economist, Idaho Department of Labor • 420 Falls Ave. Twin Falls, ID 83301 • (208) 735-2500 ext. 3062 • seth.harrington@labor.idaho.gov • Labor Market Information website: lmi.idaho.gov