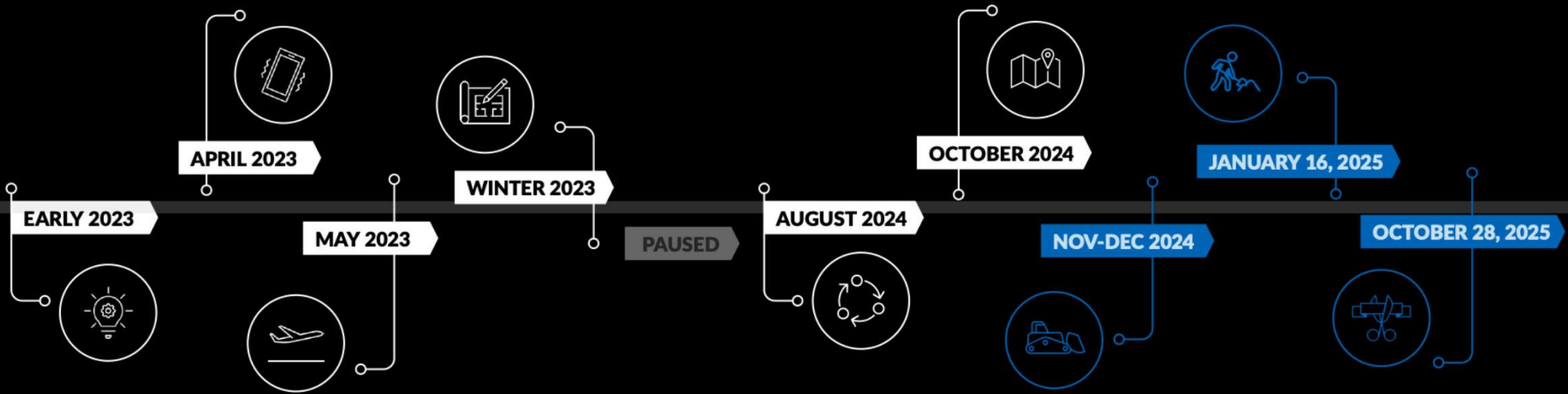


# PROJECT CONNECT



A BusinessPlus + Mini-Cassia Chamber of Commerce  
QUARTERLY PRESENTATION

# PROJECT TIMELINE

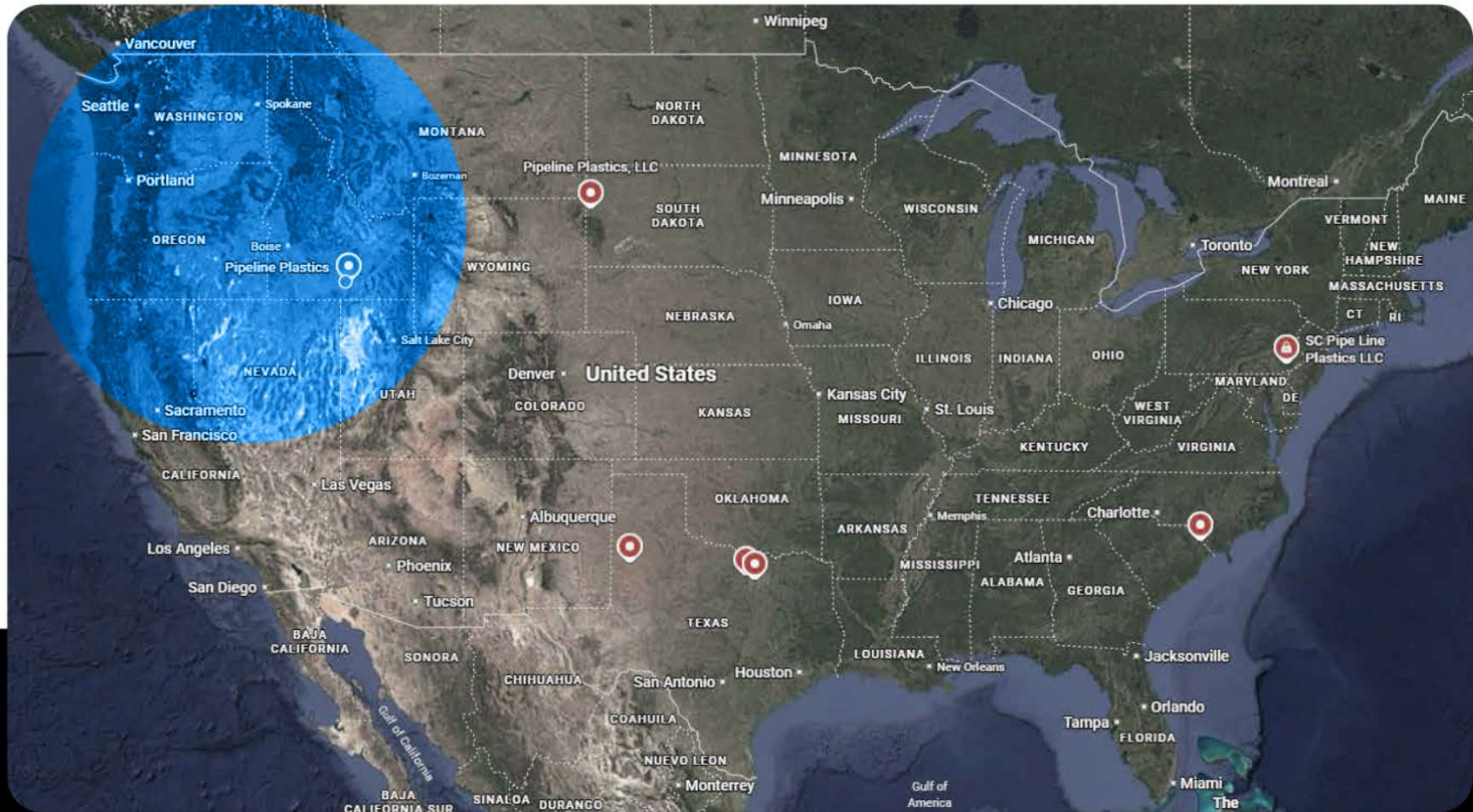


**PRE-CONSTRUCTION**

**CONSTRUCTION**



IDEA



EARLY 2023

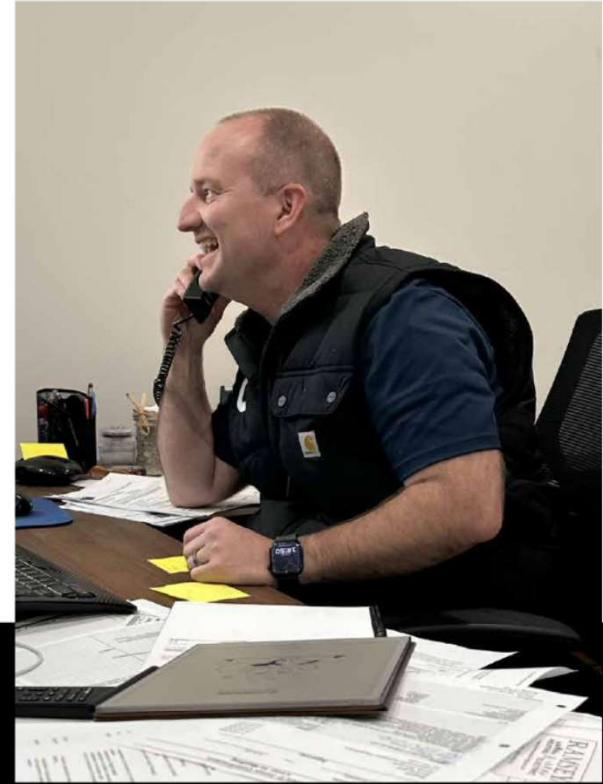


# FIRST CONTACT IN IDAHO

Jordan



Cade

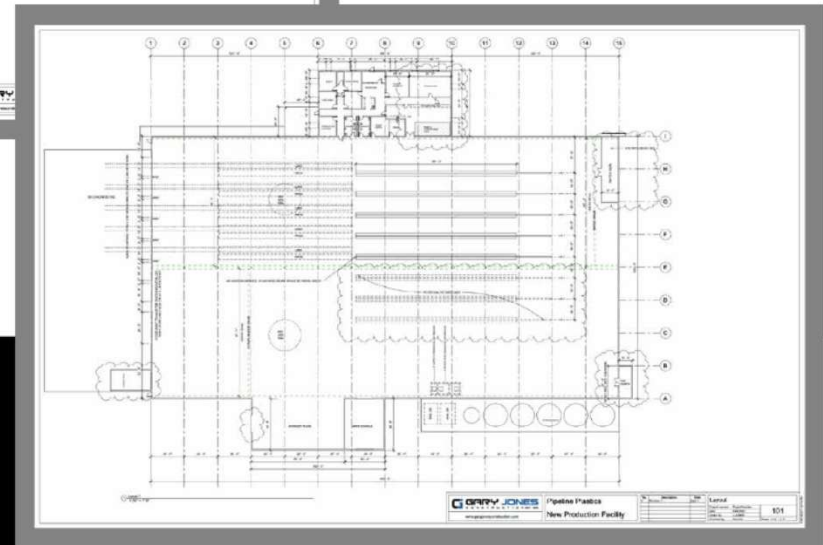
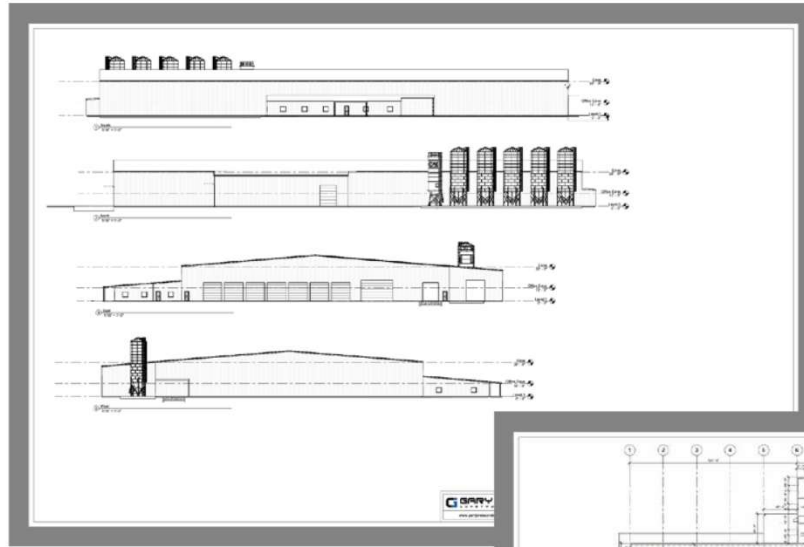


EARLY 2023

APRIL 2023



# PRELIMINARY PLANS



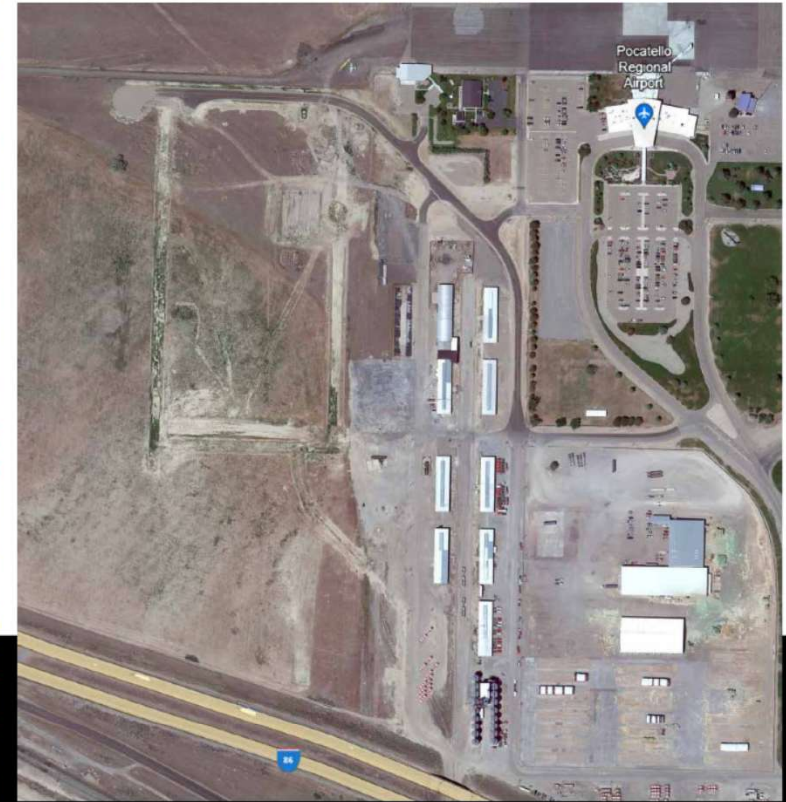
EARLY 2023

APRIL 2023

MAY 2023



# FROM SITE TO SITE



EARLY 2023

APRIL 2023

MAY 2023

WINTER 2023





**PROJECT  
PAUSED**



EARLY 2023

APRIL 2023

MAY 2023

WINTER 2023

PAUSED



ASPIRE15



# SUNTADO PROJECT COMPLETED

ASPIRE15

## Suntado WAREHOUSE



- **57,000 sq. ft. Pre-Engineered Metal Building** – Designed for warehouse storage, office space, and shipping functions in a single, efficient structure.
- **Fast-Track Construction** – Completed in just over 6 months, with multiple trades working in tandem to meet strict deadlines.
- **High-Capacity Storage** – Equipped with 5 racking bays capable of storing up to 7,830 pallets of product in a temperature-controlled environment.
- **Efficient Operational Flow** – Purpose-built layout allows for streamlined product movement and traffic flow throughout the facility.
- **Proven Performance Under Pressure** – Demonstrates GJC's ability to deliver complex industrial projects on compressed timelines without compromising quality.



SIZE  
57,000 sq. ft.

LOCATION  
Burley, Idaho

BUILD LENGTH  
6.5 MONTHS

YEAR COMPLETED  
2024



# FINALIZED LOCATION



EARLY 2023

APRIL 2023

MAY 2023

WINTER 2023

PAUSED

AUGUST 2024

OCTOBER 2024



## TEAM APPROACH

### SELL IT

Gary Jones  
Aspire15  
Rupert -  
*Mayor Tammy Jones*  
*Kelly Anthon*  
*Leslie Garner*

### MAKE IT HAPPEN

TOK  
United Electric  
D.L. Evans  
MoFi  
Minidoka Building Dept.  
Trade Partners



EARLY 2023

APRIL 2023

MAY 2023

WINTER 2023

PAUSED

AUGUST 2024



# SITework



EARLY 2023

APRIL 2023

MAY 2023

WINTER 2023

PAUSED

AUGUST 2024

OCTOBER 2024

NOV-DEC 2024



# GROUND BREAKING



EARLY 2023

APRIL 2023

MAY 2023

WINTER 2023

PAUSED

AUGUST 2024

OCTOBER 2024

NOV-DEC 2024

JANUARY 16, 2025



# CONSTRUCTION



APRIL 2023

MAY 2023

WINTER 2023

PAUSED

AUGUST 2024

OCTOBER 2024

NOV-DEC 2024

JANUARY 16, 2025

JAN-OCT 2025



# GRAND OPENING



MAY 2023   WINTER 2023   PAUSED   AUGUST 2024   OCTOBER 2024   NOV-DEC 2024   **JANUARY 16, 2025**   JAN-OCT 2025   **OCTOBER 28, 2025**

# TAKEAWAYS



- 1 RETURN THE CALL**
- 2 TEAM, NETWORKING, AND CONTACTS ARE CRITICAL TO THE SUCCESS OF THIS TYPE OF PROJECT**
- 3 CREATIVE (QUICK CREATIVITY)**
- 4 TIMELY**
- 5 FOCUS**



# | SPECIAL THANKS TO



**POCATELLO**



**D.L. Evans**  
BANK

**mofi**



**Mayor Tammy Jones**  
**Kelly Anthon**  
**Leslie Garner**



# QUESTIONS?



**PIPELINE**<sup>®</sup>  
PLASTICS



247 W US-30, Burley, Idaho 83318

PWCL #PWC-G-10847 | CMC #7371581 | PWL #17634

**Jason Jones**

President and CEO

(208) 300-0040

[jason@garyjonesconstruction.com](mailto:jason@garyjonesconstruction.com)

